



.....	01
1.1	02
1.2	04
2.1	05
2.2	06
2.3	07
2.4 CTTBI	11
.....	12
.....	29
.....	30
5.1	30
5.2	31
5.3 GTTBI	34
5.4 GTTBI	36
.....	48

CTTBI

2016

2017

2016

Twitter Facebook

GTTBI

1.1

2013

"

" 2015 1

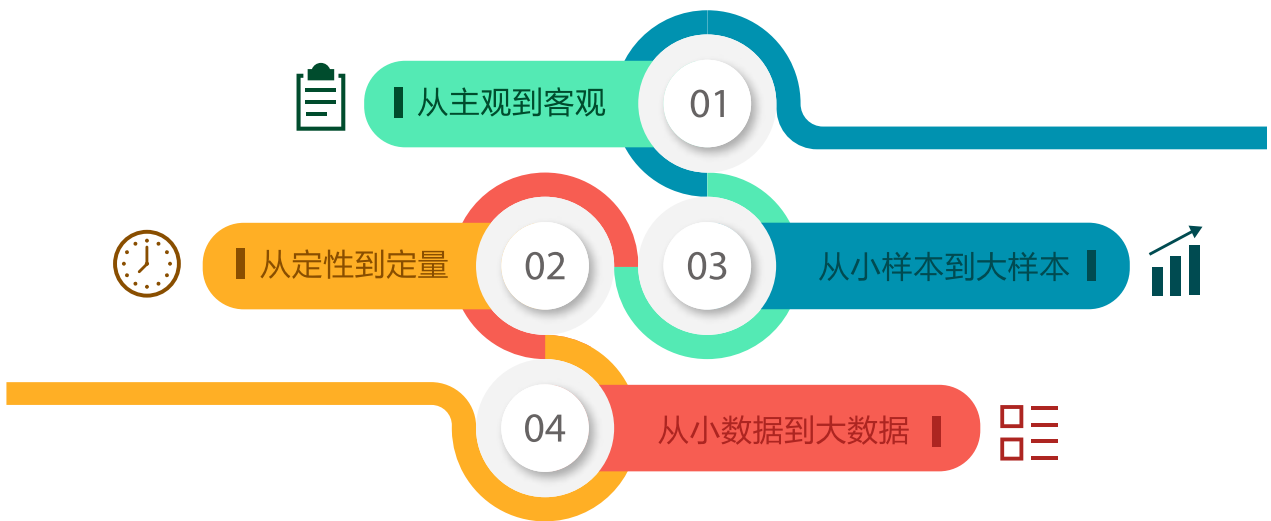
"

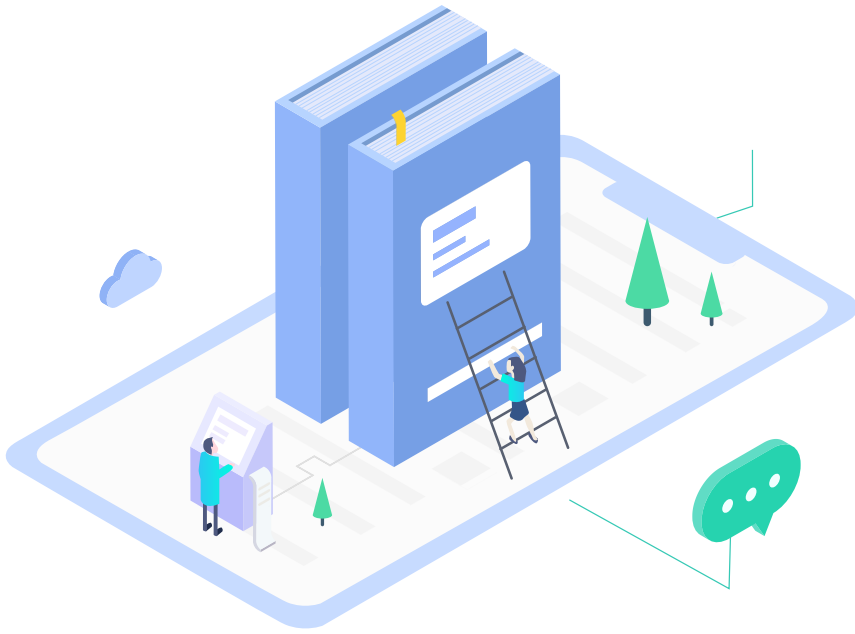
"

2015 12



“ ”





“ ”

APP

www.gsdata.cn

16
APP

1900

2

6155

500

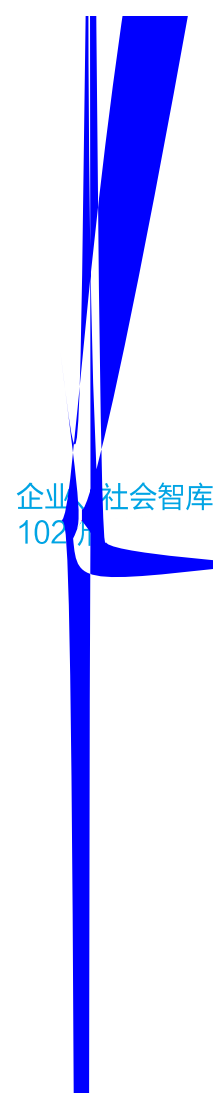
300~600GB

全网站收录解析
16万个



2.2

			510		510	"	"
	510				510		
218		102		36		46	
101	2	5					



2.3

510

1004

2017 1 1 2017 12 31

1900

259

207

7.35

2.70

4.36

435.88

259

16.1M

2016

2017

149

259

2017

3.90

7.35

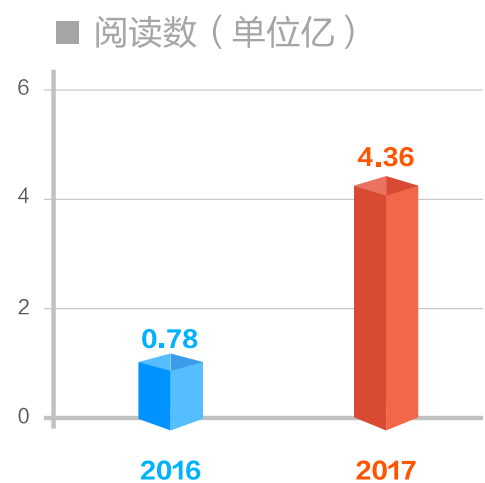
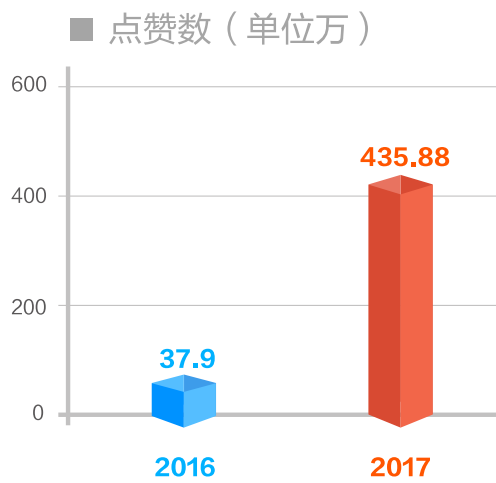
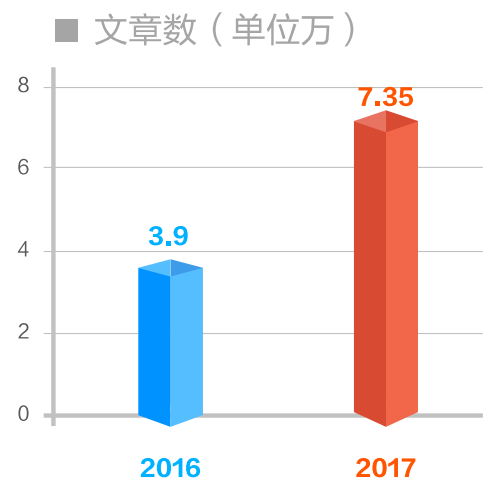
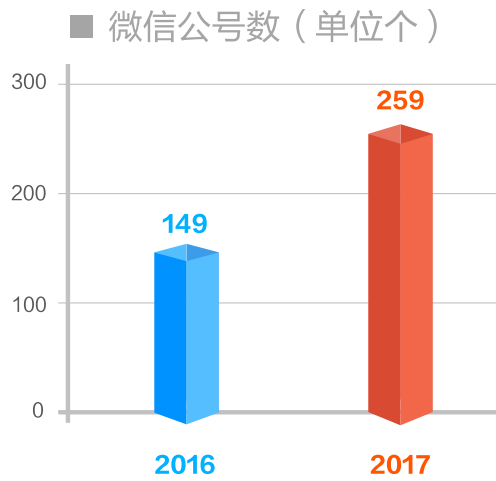
1.88

10

5

2016

2017



3 CTTBI 2016 2017

2

4516

190

1186

1.09

1186

26.13

537.23

701.06

236.87

78.28M

2016

529

1186

143

190

0.65

1.09

15.1

26.13

3.7

30.00M

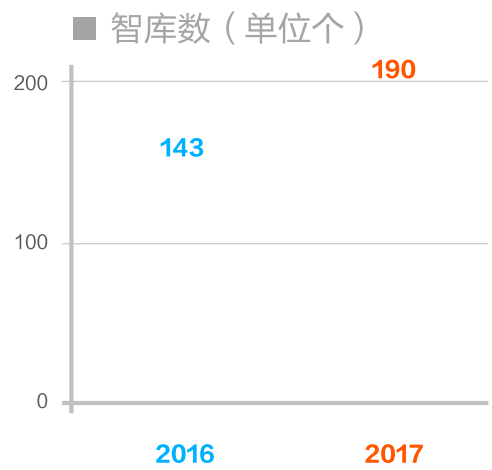
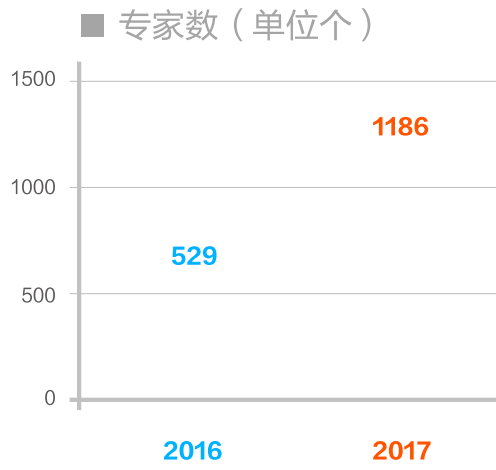
78.28M

2016

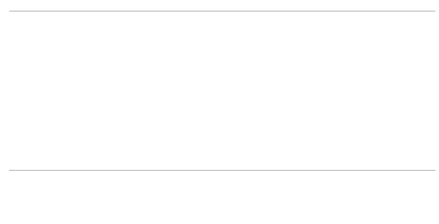
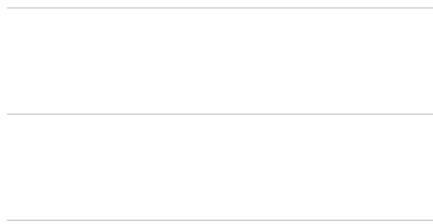
2.6

2016

2017

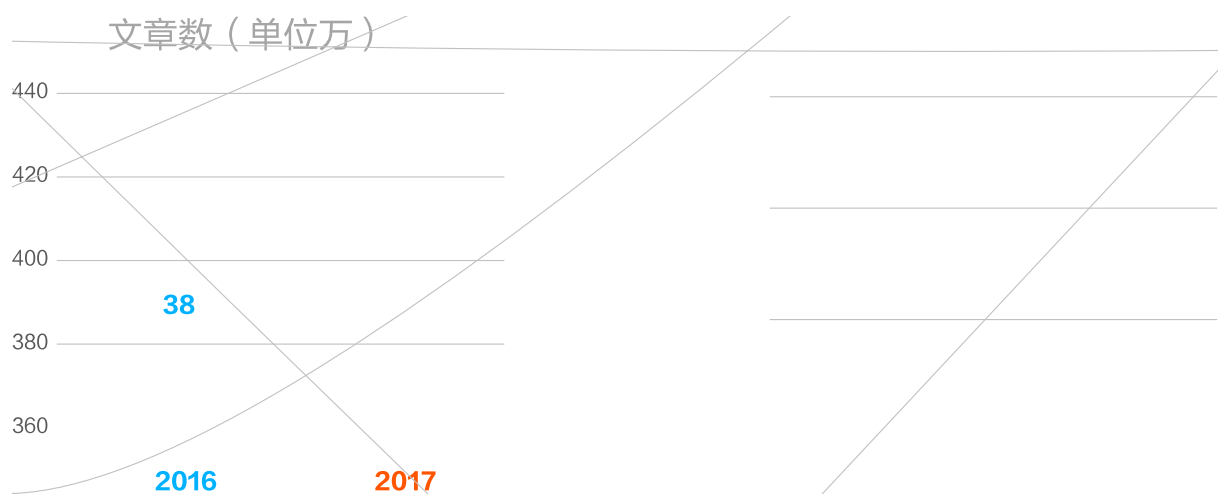


总粉丝数 (



4 CTTBI 2016 2017

1900
 417.58
 471.41M
 1.24
 136.00
 2016
 384
 417.58
 370.00M
 471.41M
 510
 2016



A++

1

A++

2

A++

3

CTTBI

A++

4



CTTBI 2017

1

	71.91	7409	218329481	2086483	2.9589	6.8602	1.0685
	50.04	1608	8127298	37108	0.9726	4.5296	0.4695
	46.80	568	3518833	56697	0.4932	3.1556	1.4933
	47.50	2255	808074	7522	1.8082	3.4167	0.9701
	64.65	2781	153275195	1726975	3.0603	2.4897	1.1794
	45.68	1661	956463	8165	1.1808	3.8538	0.7769
	48.49	2292	1234080	8388	0.9973	6.2967	0.6253
	50.30	1967	5199431	27427	1.1123	4.8448	0.5299
	53.07	1612	12878003	138911	1.7918	2.4648	1.1214
	51.53	2645	3042780	22668	2.2658	3.1983	0.7456
	43.82	1178	330001	4740	0.7671	4.2071	1.4822
	44.13	1110	708726	7817	0.6822	4.4578	0.847
	43.45	295	14806	1071	0.2712	2.9798	6.6549
	43.98	622	27150	1730	0.6301	2.7043	5.4843
	45.21	2452	123946	1468	0.9918	6.7735	1.3336
	42.37	892	1738474	9699	0.9836	2.4847	0.5514
	42.26	753	1459459	10345	0.7342	2.8097	0.7353
	45.12	1253	1062771	10912	0.9205	3.7292	0.9173
	44.85	1418	519817	6416	0.9699	4.0056	1.2168
	44.10	1121	2608619	9942	0.9479	3.2399	0.3554
	35.35	262	424937	5081	0.5096	1.4086	1.2084
	36.82	329	1509513	7773	0.6247	1.4430	0.5057
	36.41	243	3080	168	0.1863	3.5735	5.2139
	38.95	953	125335	1177	0.6685	3.9057	1.1415



	34.26	347	68259	723	0.2795	3.4020	1.1574
	31.94	309	105659	1228	0.6384	1.3262	1.1702
	31.24	298	46388	548	0.3753	2.1752	1.2106
	32.26	215	66257	1060	0.3123	1.8860	1.6678
	31.85	153	17015	529	0.1534	2.7321	2.2933
	32.30	18	3868	263	0.0356	1.3846	6.808
	34.44	179	15282	320	0.1452	3.3774	3.2874
	30.73	309	69882	555	0.4219	2.0065	0.8100
	29.81	88	16820	474	0.1205	2	2.5268
	31.40	272	6969	93	0.1315	5.6667	1.4291
	34.30	206	148413	2708	0.3068	1.8393	1.6323
	34.06	92	15170	797	0.2411	1.0455	5.3914
	33.80	238	45756	1302	0.5233	1.2461	2.9727
	34.73	164	41746	1162	0.2164	2.0759	3.1442
	32.79	214	48163	731	0.1671	3.5082	1.0318
	30.79	87	74571	1765	0.2219	1.0741	2.3759
	32.99	93	22452	777	0.1342	1.8980	3.6154
	31.59	82	204118	1130	0.0795	2.8276	0.5660
	34.67	151	10967	317	0.0932	4.4412	3.0238
	34.88	289	10156	347	0.211	3.7532	3.0200
	32.33	272	113458	1461	0.5479	1.3600	1.3670
	33.32	295	90652	2568	0.5315	1.5206	1.3530
	32.76	315	125363	1302	0.4904	1.7598	1.0476
	29.62	208	175131	1130	0.5479	1.04	0.6455
	32.33	339	43389	436	0.2959	3.1389	1.0433
	31.72	212	41846	886	0.3233	1.7966	1.9030

CTTBI 2017

2

A++			67.69	7938751	600	32592	42.5367	90.6867	54.32
A++			63.2	1077639	1489	104983	30.4359	19.8664	70.5057
A++			62.49	3956793	4618	93783	11.9879	22.398	20.3081
A++			64.91	10679026	6558	100197	10.2912	21.3335	15.2786
A++			63.55	414985	1180	92922	47.5941	64.4907	78.7475
A++			69	1875901	3891	221530	48.1599	93.4588	56.934
A++			75.24	15017783	53646	2115301	14.5472	59.6208	39.4307
A++			65	2914990	980	39899	49.698	81.9214	40.7133
A++			74.69	19050314	41186	1602802	13.8079	45.6063	38.9162
A++			77.76	619257	72	9477	155.5417	310.7083	131.625
A+			59.98	676294	5295	137856	20.8347	33.0918	26.0351
A+			55.99	842027	2509	49007	3.9374	6.1614	19.5325
A+			58.91	1139940	6070	90365	9.2115	21.9064	14.8871
A+			58.37	359095	3638	131013	19.0047	26.2257	36.0124
A+			56.88	401207	5852	109159	8.8759	26.6372	18.6533
A+			56.6	1948473	1651	19646	4.2956	26.8843	11.8995
A+			56.54	1025362	3969	54120	4.3686	3.553	13.6357
A+			58.2	1674651	13121	63824	1.0533	2.1165	4.8643
A+			58.6	2025918	4195	51131	5.5645	15.2076	12.1886
A+			62.1	1012111	992	30241	56.1673	98.3478	30.4849
A		21	51.05	2237214	155	2034	2.9548	7.3355	13.1226
A			48.18	565021	2534	1351	0.1598	0.4542	0.5331
A			42.97	136793	814	858	0.3857	1.3145	1.0541
A			44.68	36243	10832	6468	0.2783	1.0493	0.5971

A			52.43	741732	4420	10797	0.5106	1.0864	2.4428
A			41.82	83462	3016	418	0.2354	0.377	0.1386
A			46.48	213094	2984	2118	0.4253	0.3847	0.7098
A			43.09	610659	300	116	0.42	1.33	0.3867
A			52.24	2322779	514	2933	4.2763	6.6109	5.7062
A			47.54	147585	7302	4735	0.5063	2.4736	0.6485
A			55.39	400527	5911	77669	7.0856	11.2345	13.1397
A			45.12	93326	1810	4188	1.6635	2.4884	2.3138
A			47.41	45521	591	20806	3.2234	13.225	35.2047
A			45.68	190962	4626	1099	0.1786	1.0465	0.2376
A			47.91	321260	139	2591	20.0863	9.1007	18.6403
A			47.99	348642	1424	2982	1.4319	9.264	2.0941
A			43.92	279803	360	740	0.5278	0.6806	2.0556
A			44.74	120333	102	1970	19.3137	9.0392	19.3137
A			46.52	764015	1529	328	0.2341	0.3767	0.2145
A			41.29	38735	1178	1897	0.9593	2.2886	1.6104
A			48.66	227016	1925	9183	1.2031	1.8426	4.7704
A			53.05	1139096	372	8185	7.1263	9.3871	22.0027
A	50		50.79	257768	5051	17377	1.6676	5.3184	3.4403
A			43.43	1664157	92	49	0.4457	1.663	0.5326
A			45.71	89080	5238	4192	0.2409	0.5416	0.8003
A			43.77	163785	775	1102	0.551	1.3897	1.4219
A			55.98	1027169	250	10126	26.14	29.12	40.504
A			55.39	5292773	588	3769	0.9235	29.5153	6.4099
A			48.2	538580	2861	1354	0.26	1.202	0.4733
A			43.08	1398072	56	64	1.1607	4.5	1.1429

A-			31.72	40883	77	10	0.7403	1.6883	0.1299
A-			34.83	10804	719	285	0.2503	2.1252	0.3964
A-			36.62	11778	1207	602	1.2577	1.9478	0.4988
A-			34.51	8431	267	542	3.1948	2.8502	2.03
A-			39.49	31068	117	1534	2.9915	7.4274	13.1111
A-			34.66	41539	47	86	1.8723	11.2553	1.8298
A-			30.84	24129	282	6	0.0816	0.2589	0.0213
A-			40.86	36666	416	2033	3.8341	6.3846	4.887
A-			40.6	28574	696	2657	0.6997	0.8491	3.8175
A-			40.08	18155	4665	1502	0.0294	0.4774	0.322
A-			33.94	38271	110	50	0.1182	0.9727	0.4545
A-			29.39	1234	1252	225	0.0527	0.0359	0.1797
A-			37.34	10062	311	2168	1.746	4.4855	6.9711
A-			37.91	28958	734	433	0.252	0.5504	0.5899
A-			32.1	17572	33	104	0.8485	0.6364	3.1515
A-			32.51	15540	167	71	0.4731	0.8263	0.4251
A-			29.21	4878	493	28	0.069	0.0933	0.0568
A-			32.01	13340	266	49	0.3083	0.8195	0.1842
A-			37.06	67479	476	65	0.1429	0.9832	0.1366
A-			30.22	24945	19	20	1.3684	2.1053	1.0526
A-			35.67	16444	1487	158	0.0067	0.2771	0.1063
A-			33.53	11742	99	315	0.2525	0.3333	3.1818
A-			32.2	19197	149	42	0.4362	0.2685	0.2819
A-			40.73	89175	613	450	0.3605	1.783	0.7341
A-			30.4	17469	252	9	0.0278	0.4841	0.0357
A-			32.73	1717	1600	1104	0.3869	1.1075	0.69
A-			38.33	18849	1277	820	2.0728	0.9186	0.6421



A-			39.54	66062	1357	211	0.0796	0.2218	0.1555
A-	()		35.08	80148	227	18	0.0925	0.2247	0.0793
A-			37.69	41003	336	320	0.2262	0.4554	0.9524
A-			40.2	53873	908	584	1.3073	1.6256	0.6432
A-			35.65	2601458	1	0	0	3	0
A-			40.39	75503	246	592	2.7602	10.0081	2.4065
A-			33.22	97476	75	6	0.32	0.4533	0.08
A-			40.28	255673	339	72	0.1917	0.5428	0.2124
A-			30.34	7126	101	83	0.6337	1.7624	0.8218
A-			33	30428	42	58	2.9524	2.881	1.381
A-			34.68	25597	272	101	0.4228	0.375	0.3713
A-			36.39	7554	5849	458	0.068	0.1202	0.0783
A-			32.42	8204	351	136	0.4558	0.245	0.3875
A-			30.57	19322	80	16	2.2375	2.7	0.2
A-			35.37	7684	129	1299	1.2481	5.1085	10.0698
A-			36.62	3812082	1	0	0	3	0
A-			36.01	3993938	0	0	0	0	0
A-			31.08	34978	305	3	0.0262	0.0721	0.0098
A-			35.95	32717	374	123	0.5053	2.6845	0.3289
A-			33.32	50679	89	22	0.0449	0.191	0.2472
A-			37.89	41697	300	367	0.7267	1.2033	1.2233
A-			39.12	92070	825	117	0.0521	0.1855	0.1418
A-			39.93	107267	95	490	0.3368	1.2105	5.1579

CTTBI 2017

3

A++		75.58	65416	3551970	39612	2.441
A++		76.46	127463	3096230	32739	2.2698
A++		82.44	274941	10940550	108016	2.343
A++		88.13	729025	24783213	293328	2.3938
A++		77.03	115249	4515940	60178	2.1371
A++		89.32	1066206	28170254	320497	2.3301
A++		76.2	83550	2943764	42653	2.4355
A++		74.96	52747	2680911	27348	2.6751
A++		84	408295	11916100	140071	2.3061
A++		72.98	47142	2576994	34367	2.1869
A+	21	67.46	17233	581006	16707	2.2886
A+		71.85	83028	793633	7743	2.4074
A+		69.9	36093	1444287	9780	2.2837
A+		72.18	26468	2190136	17456	2.7393
A+		71.3	30953	200832	2704	3.8325
A+		67.44	30843	649178	6086	2.2085
A+		69.3	43263	687416	9863	2.2112
A+		67.01	24851	473529	3337	2.5946
A+		68.86	31080	938560	8590	2.314
A+		69.01	31776	701151	7291	2.4844
A		66.66	28197	611878	3962	2.2697
A		63.49	18743	250332	2606	2.2103
A		62.44	8799	305646	4672	2.2337
A		63.15	4385	727672	5323	2.6353

A			61.48	1 3248	203758	1856	2.1649
A			60.09	6287	1 35904	1 345	2.6282
A			61.34	3853	51 3640	2607	2.663
A			65.6	1 2065	232476	1493	3.3151
A			63.55	9482	744579	6058	2.0917
A			60.03	6396	182065	2085	2.3421
A			60.95	8378	304255	2873	2.0912
A			60.77	9262	179740	2281	2.2147
A			59.52	8643	144498	1378	2.2168
A			59.85	6842	180707	3146	2.0865
A			61.12	1 2940	1 63558	1978	2.1324
A			62.7	8249	530064	2730	2.3992
A			63.18	14123	527489	2365	2.1694
A		40	64.77	20413	563079	3146	2.1551
A			62.07	10773	382023	1706	2.3211
A			63.12	15632	311654	1650	2.3723
A			60.81	4980	203871	4392	2.4015
A			61.03	14293	1 35604	1650	2.161
A			63.15	22096	213900	2871	2.0099
A			65.85	35063	330384	1887	2.3729
A			63.61	9946	524443	4390	2.301
A			62.8	10740	438975	3723	2.1575
A			63.57	9792	300317	2022	2.7718
A			60.37	8890	117685	1912	2.3384
A			59.64	9180	152006	1369	2.1886
A			66.73	28431	494104	3711	2.3669

A-			55.76	2658	34128	381	3.0986
A-			56.66	1588	99425	398	3.3837
A-			55.91	2589	151883	1147	2.2872
A-			56.34	3695	57777	780	2.5576
A-			58.71	10612	40067	350	2.7728
A-			57.92	6839	105572	904	2.252
A-			57.72	6776	86838	1551	2.0529
A-			56.83	8140	62757	720	2.089
A-			55.54	4755	62403	945	2.0678
A-			54.3	2362	76786	540	2.4498
A-			57.37	4485	95788	1124	2.3782
A-			55.19	2271	162025	1044	2.2235
A-			56.05	1461	397757	1994	2.2566
A-			56.9	4835	90637	730	2.3897
A-			55.66	2667	87772	906	2.4542
A-			56.95	4481	87246	941	2.3699
A-			55.52	3577	45605	433	2.6787
A-			56.32	8005	47047	598	2.1307
A-			58.76	5410	158171	1264	2.3898
A-			54.18	3119	40008	547	2.3923
A-			57.76	7004	69799	1395	2.1441
A-			55.5	4345	40705	642	2.4047
A-			57.73	3665	91351	1951	2.4166
A-			56	2662	92566	599	2.6885
A-			57.38	6350	65563	967	2.2851
A-			56.9	4415	180312	1029	2.1229
A-			58.79	3939	263631	2175	2.2743

A-			56.15	2036	334795	2767	1.9505
A-			54.17	3472	43800	430	2.3769
A-			54.47	5288	41842	429	2.1481
A-			54.86	5175	122933	452	1.9272
A-			58.14	3995	354083	1631	2.1308
A-			56.79	8816	107016	640	1.909
A-			54.85	2895	237733	489	2.1431
A-			57.4	8639	128086	881	1.8993
A-			55.88	6319	25490	739	2.2959
A-			56.62	5138	113004	1150	2.0288
A-			54.15	3107	88184	796	2.0113
A-	50		57.97	6479	66525	752	2.5123
A-			57.44	7143	91655	1137	2.0507
A-			57.98	7931	185747	928	1.9802
A-			54.74	2766	74933	886	2.2513
A-			54.97	2139	325601	707	2.1655
A-			54.69	3387	65306	544	2.3168
A-			54.77	4776	43607	537	2.2004
A-			59.3	9402	116504	846	2.3539
A-			55.29	2560	109863	533	2.5368
A-			58.13	2762	144879	5592	2.181
A-			54.87	3014	34430	615	2.5882
A-			59.36	5870	175349	4299	1.9658

CTTBI 2017

4

A++		60.43	46.8	58.91	75.58
A++		56.31	64.65	32.1	72.18
A++		57.8	45.68	67.69	60.03
A++		57.34	48.49	52.24	71.3
A++		59.48	25.4	64.91	88.13
A++		66.37	53.07	69	77.03
A++		54.85	0	75.24	89.32
A++		56.4	37.02	55.98	76.2
A++		54.85	45.12	58.6	60.81
A++		63.24	31.04	74.69	84
A+	21	51.29	35.35	51.05	67.46
A+		53.38	43.82	59.98	56.34
A+		52.63	47.5	33.94	76.46
A+		48.77	23.49	55.39	67.44
A+		51.79	30.18	62.49	62.7
A+		51.8	42.19	43.92	69.3
A+		49.17	22.32	58.2	67.01
A+		49.05	31.77	46.52	68.86
A+		52.39	35.13	53.05	69.01
A+		51.85	34.57	63.55	57.44
A		43.51	36.82	27.05	66.66
A		44.57	22.03	48.18	63.49
A		43.43	31.24	36.62	62.44

A			40.76	31.85	34.51	55.91
A			47.11	44.13	44.68	52.53
A			43.32	31.4	40.86	57.72
A			45.29	34.3	40.08	61.48
A			41.43	0	52.43	71.85
A			42.63	37.11	32.01	58.76
A			46.98	29.62	58.37	52.96
A			43.26	24.8	45.12	59.85
A			43.38	40.56	32.2	57.38
A			41.41	26.08	45.68	52.48
A			40.91	40.74	32.73	49.28
A			42.7	37.08	38.33	52.71
A			46.33	0	56.54	82.44
A			47.28	50.3	35.65	55.88
A			42.31	35.28	28.48	63.18
A			44.04	29.29	48.66	54.15
A		40	44.57	41.89	27.06	64.77
A			41.76	34.38	43.43	47.45
A			43.83	33.63	43.77	54.08
A			45	38.2	65	31.78
A			40.68	37.42	35.37	49.26
A			41.05	0	48.2	74.96
A			42.48	44.85	27.92	54.69
A			43.16	0	77.76	51.71
A			46.78	44.1	23.25	72.98
A			48.18	38.7	39.12	66.73
A			46.62	40.57	39.93	59.36

A-	IBM	30.1	11.88	25.98	52.44
A-		33.37	36.41	7.93	55.76
A-		31.54	34.26	11.91	48.44
A-		39.23	71.91	0	45.78
A-		37.73	50.04	0	63.15
A-		37.97	0	55.99	57.92
A-		32.21	43.98	0	52.67
A-		38.76	34.06	27.93	54.3
A-		34.2	45.21	0	57.37
A-		40.49	32.79	27.33	61.34
A-		37.94	25.29	37.34	51.21
A-		31.14	0	37.91	55.52
A-		37.24	41.24	24.45	46.04
A-		32.24	35.96	0	60.77
A-		30.01	0	43.09	46.93
A-		39.79	28.13	37.06	54.18
A-		35.1	0	47.54	57.76
A-		32.65	26.93	11.51	59.52
A-		40.49	42.26	18.09	61.12
A-		34.3	0	47.41	55.5
A-		30.8	39.09	0	53.32
A-		31.38	0	40.73	53.42
A-		40.66	0	63.2	58.79
A-		35.26	39.04	12.59	54.17
A-		31.89	15.83	28.4	51.44
A-		31.31	37.16	0	56.79

A-			30.66	0	39.54	52.45
A-			37.15	0	56.6	54.85
A-			34.11	21.37	23.57	57.4
A-			37.79	29.75	47.91	35.71
A-			32	24.24	15.15	56.62
A-			29.85	0	47.99	41.57
A-			35.08	17.39	44.74	43.1
A-			38.67	27.4	40.28	48.34
A-		50	36.94	2.06	50.79	57.97
A-			32.06	28.41	19.83	47.94
A-			39.51	25.26	45.71	47.57
A-			32.26	22.42	36.39	37.97
A-			30.18	25.62	32.42	32.5
A-			39.5	0	55.39	63.12
A-			32.35	0	36.01	61.03
A-			35.41	0	43.08	63.15
A-			33.24	0	62.1	37.62
A-			32.78	32.5	0	65.85
A-			38.38	51.53	0	63.61
A-			32.77	34.72	0	63.57
A-			38.3	26	35.95	52.96
A-			30.16	30.85	0	59.64
A-			36.4	32.68	18.39	58.13
A-			39.05	24.4	37.89	54.87

2017

CTTBI

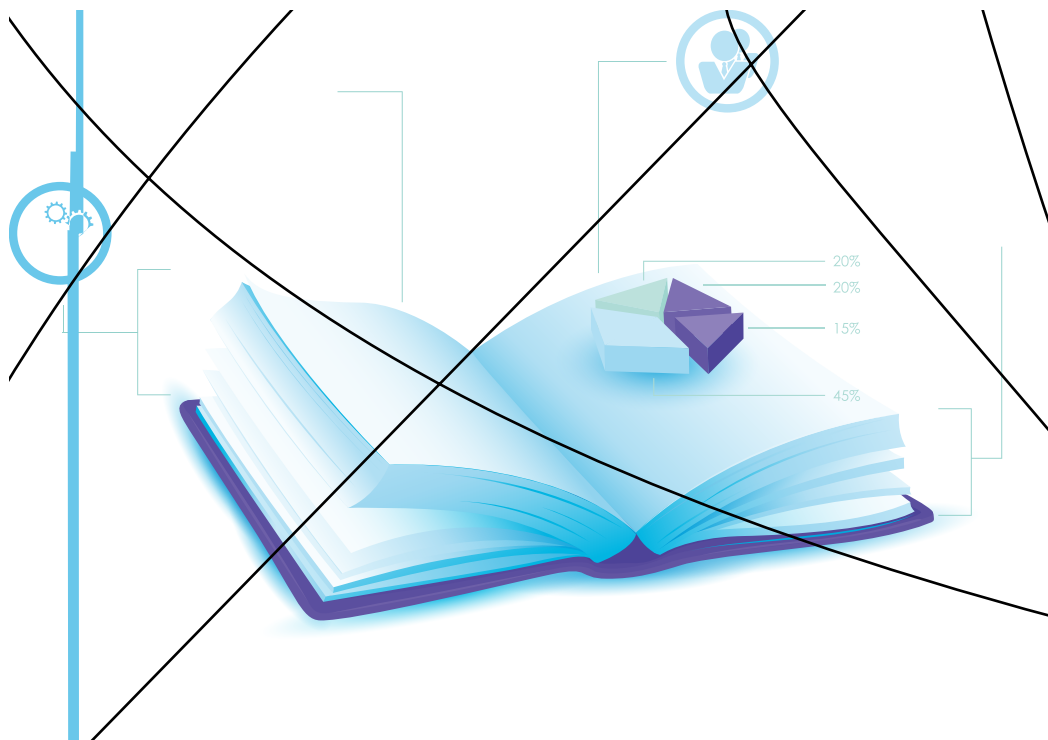
"

"

2016

2016

2017



2017

Twitter Facebook

5.1

2015

2015 Global Go To Think Tank Index Report

62

213

213

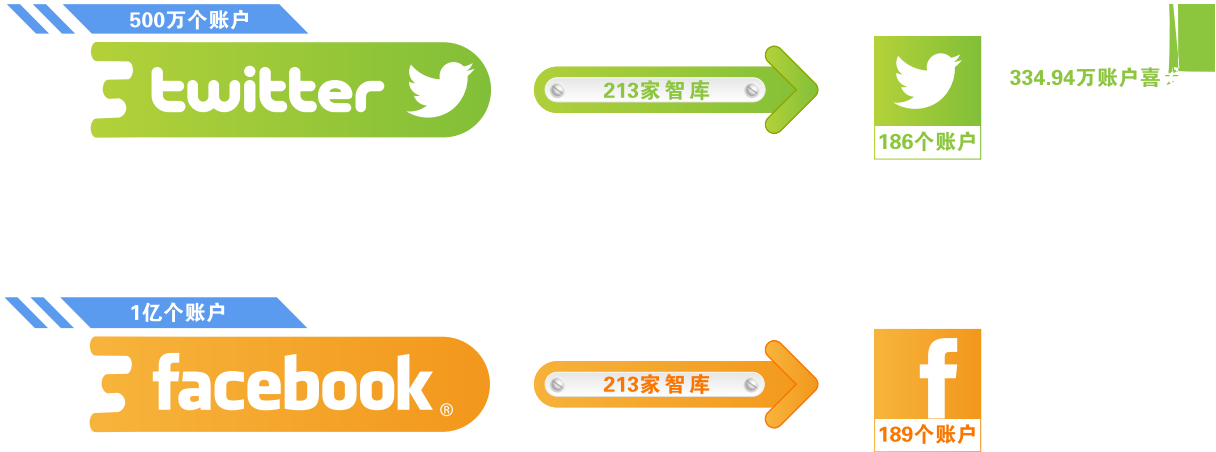
	SUB-SAHARAN AFRICA 18	ASIA 45	CENTRAL
AND EASTERN EUROPE 12		WESTERN EUROPE 66	CENTRAL
AND SOUTH AMERICA 22		MIDDLE EAST AND NORTH AFRICA 9	
NORTH AMERICA 37		OCEANIA 4	





1.

500	twitter	1	Facebook
213		186	Twitter
		189	Facebook



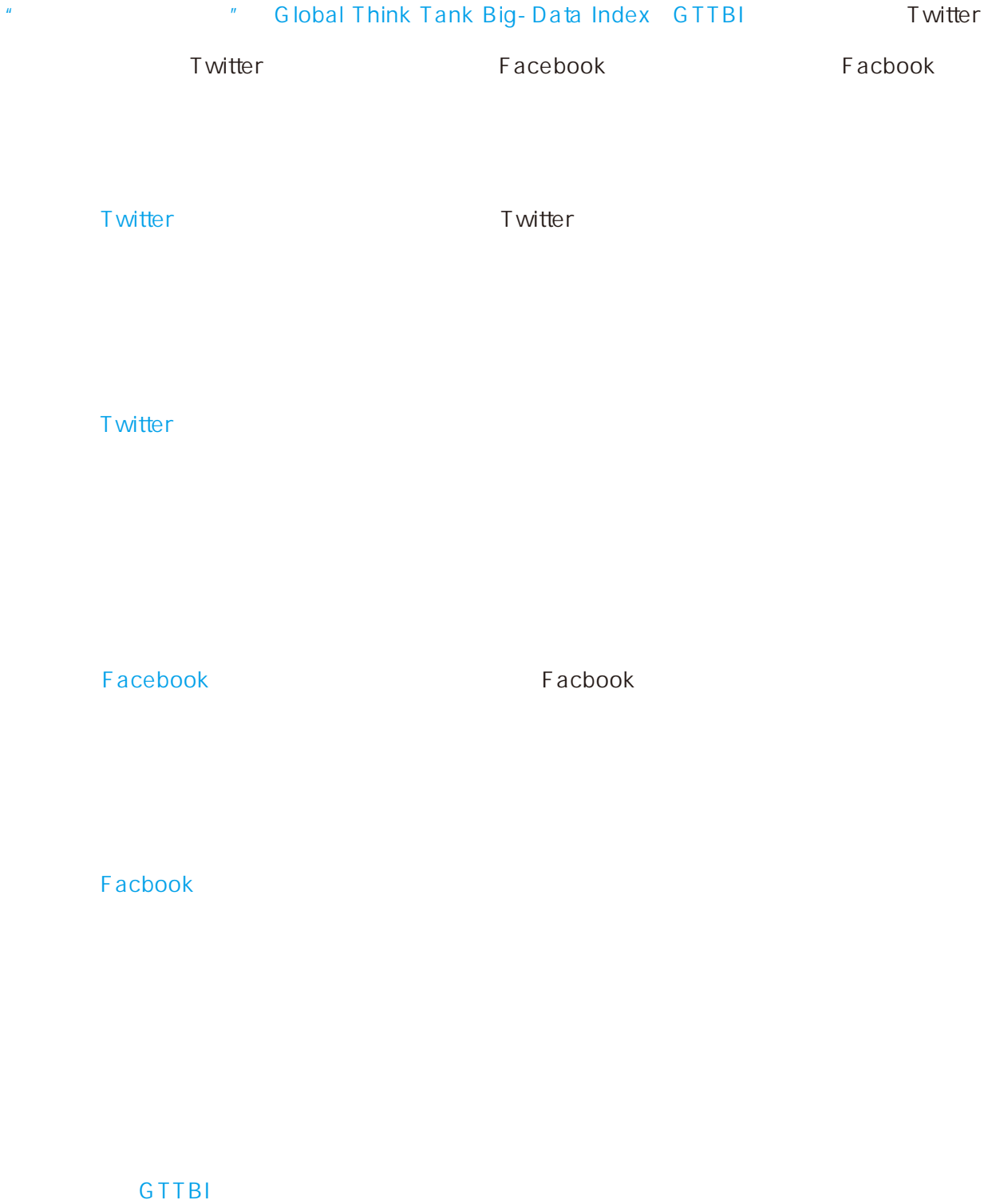
186		186	Twitter	334.94	Account Likes	1899.64
	Followers			186	Twitter	11.76
Tweets	515.34	Re- tweets	39.10	Comments		1056.74
Likes						

189		189	Facebook	2266.18	Account Likes	2243.30
	Follows			189	Facebook	6.93
Posts	797.14	Shares	64.62	Comments		1402.24
Likes						

2.

	Twitter	Facebook				
213			190	Twitter		
142	Facebook					
	500	Twitter	1	Facebook		
Twitter			190	29.75	69.08	14.37
	101.83		Facebook		142	1.07
53.71		15.47	288.00			





			Log n+1	0- 100
Twitter		40%		
		10%		
		10%		
		10%	✓	
	25%	10%		
		10%		
		10%		
Twitter	Followers	10%		
	Account Likes	10%		
		10%	✓	
		20%	✓	
		10%	✓	
	25%	10%		
		10%		
		10%		
Facebook		40%	✓	✓
		10%	✓	✓
		10%	✓	✓
		10%	✓	✓
	25%	10%		✓
		10%		✓
Facebook	Follows	10%	✓	✓
	Account Likes	10%	✓	✓
		10%	✓	✓
		20%	✓	✓
		10%	✓	✓
	25%	10%	✓	✓
		10%		✓
		10%		✓

Twitter	A++	Cato Institute	Fraser Institute
Heritage Foundation		Transparency International	
RAND Corporation		5	
Twitter	A++	Consejo Argentino para las Relaciones Internacionales	
Demos		Heritage Foundation	
Human Rights Watch		Singapore Institute of International Affairs	
6			
Facebook	A++	Center for Social and Economic Research	
Consejo Latinoamericano de Ciencias Sociales		Institute for Development and Global Governance	
Institute for International Policy Studies		International Crisis Group	
7			
Facebook	A++	Amnesty International	
Heritage Foundation		Human Rights Watch	World Bank
Institute		World Economic Forum	8
GTTBI	A++	Consejo Latinoamericano de Ciencias Sociales	
Fraser Institute		Heritage Foundation	
RAND Corporation		Transparency International	9

A++		Heritage Foundation	74.81	57315	121434	45427	281958	2.1187	0.7926	4.9194
A++		Fraser Institute	64.29	17730	32605	8775	38401	1.839	0.4949	2.1659
A++		Cato Institute	70.34	36598	64310	24437	119582	1.7572	0.6677	3.2674
A++		RAND Corporation	69.98	43492	122629	12687	119868	2.8196	0.2917	2.7561
A++		Transparency International	64.87	19412	49955	7529	41061	2.5734	0.3879	2.1152
A+		Timbro	58.6	7697	7439	3987	26406	0.9665	0.518	3.4307
A+		Hudson Institute	62.62	9392	23850	6119	42845	2.5394	0.6515	4.5619
A+		Real Instituto Elcano	58.26	5277	20474	1950	23178	3.8799	0.3695	4.3923
A+		Carnegie Europe	55.72	7542	12698	1067	11498	1.6836	0.1415	1.5245
A+		Mercatus Center	58.52	8459	13500	2894	21498	1.5959	0.3421	2.5414
A+		Pew Research Center	53.85	2007	8836	1096	11706	4.4026	0.5461	5.8326
A+		Hoover Institution	64.27	15755	43764	6647	45921	2.7778	0.4219	2.9147
A+		Council on Foreign Relations	59.28	11889	15511	2627	23988	1.3047	0.221	2.0177
A+		Fundación Libertad	54.46	2483	10075	1342	10642	4.0576	0.5405	4.2859
A+		Libertad y Desarrollo	59.48	2292	20830	1694	20546	9.0881	0.7391	8.9642
A		Consejo Argentino para las Relaciones Internacionales	48.51	38	774	76	983	20.3684	2	25.8684
A		Bruegel	51.02	2228	5701	514	11890	2.5588	0.2307	5.3366
A		Brookings Institution	52.32	1954	5573	1124	9044	2.8521	0.5752	4.6285
A	---	Catham House	53.29	2670	6271	1369	10092	2.3487	0.5127	3.7798
A		Urban Institute	49.17	1638	4971	443	6172	3.0348	0.2705	3.768
A		International Crisis Group	47.73	1703	3658	406	3608	2.148	0.2384	2.1186
A		National Bureau of Economic Research	48.17	646	3608	267	7907	5.5851	0.4133	12.2399
A		Institute of Economic Affairs	48.65	921	3381	611	4609	3.671	0.6634	5.0043

A	Africa Institute of South Africa	52.32	474	5712	411	5666	12.0506	0.8671	11.9536
A	World Economic Forum	52.06	1329	7301	540	12475	5.4936	0.4063	9.3868
A	World Resources Institute	51.55	1763	10232	381	8714	5.8037	0.2161	4.9427
A	Institucion Futuro	52.74	2334	6434	1027	11563	2.7566	0.44	4.9542
A	Resources for the Future	53.58	3077	7365	968	16478	2.3936	0.3146	5.3552
A	Adam Smith Institute	53.28	2076	5121	1518	10089	2.4668	0.7312	4.8598
A	Centre for Strategic and International Studies	48.51	99	1171	195	1885	11.8283	1.9697	19.0404
A-	Institute for Security Studies	39.87	458	897	171	881	1.9585	0.3734	1.9236
A-	Peace Research Institute Oslo	44.24	116	2348	14	1984	20.2414	0.1207	17.1034
A-	Istituto Bruno Leoni	39.78	675	967	105	852	1.4326	0.1556	1.2622
A-	Delhi Policy Group	39.68	53	598	78	448	11.283	1.4717	8.4528
A-	East-West Center	43.79	1297	1333	209	2006	1.0278	0.1611	1.5466
A-	Centro de Estudios Publicos	41.65	390	1361	200	1393	3.4897	0.5128	3.5718
A-	Centre for Civil Society	40.35	310	974	183	1122	3.1419	0.5903	3.6194
A-	Tokyo Foundation	43.66	821	1681	185	3366	2.0475	0.2253	4.0999
A-	Observer Research Foundation	40.94	224	917	166	1688	4.0938	0.7411	7.5357
A-	Amnesty International	46.55	1017	2547	396	4125	2.5044	0.3894	4.056
A-	Royal United Services Institute	43.16	353	2455	120	2211	6.9547	0.3399	6.2635
A-	Carnegie Endowment for International Peace	42.22	1339	899	117	1404	0.6714	0.0874	1.0485
A-	European Council on Foreign Relations	45.83	1830	2445	236	2248	1.3361	0.129	1.2284
A-	Fundacao Getulio Vargas	45.59	1888	1354	264	3042	0.7172	0.1398	1.6112
A-	Center on Budget and Policy Priorities	42.01	933	1390	137	1381	1.4898	0.1468	1.4802
A-	Center for Strategic Studies	41.2	382	1526	123	1866	3.9948	0.322	4.8848
A-	Center for Strategic and International Studies	45.28	1800	2569	160	2104	1.4272	0.0889	1.1689
A-	Centre for Policy Research	41.59	780	1085	157	1595	1.391	0.2013	2.0449
A-	Centre for Policy Studies	41.99	475	1250	233	1519	2.6316	0.4905	3.1979
A-	Free Market Foundation	41.69	848	650	291	926	0.7665	0.3432	1.092

A		A t l a n t i c C o u n c i l o f t h e U n i t e d S t a t e s	50.04	819	1303	2786	62025	1912	28924	75.7326	2.3346	35.3162
A		E u r o p e a n P o l i c y C e n t r e	48.41	812	815	1651	25747	6045	28268	31.7081	7.4446	34.8128
A		P e w R e s e a r c h C e n t e r	47.1	802	80	148	22807	2249	22374	28.4377	2.8042	27.8978
A		W o r l d R e s o u r c e s I n s t i t u t e	47.45	552	12244	122914	7075	293	8608	12.817	0.5308	15.5942
A		H o o v e r I n s t i t u t i o n	49.96	816	24348	4933	20907	3547	47829	25.6213	4.3468	58.614
A		C e n t e r o n B u d g e t a n d P o l i c y P r i o r i t i e s	46.61	801	1062	651	30492	1509	23231	38.0674	1.8839	29.0025
A		C e n t r e f o r P o l i c y S t u d i e s (U K)	49.03	659	256	305	25335	8072	20721	38.4446	12.2489	31.4431
A		F u n d a c i ó n L i b e r t a d	47.7	198	3511	645	63953	3553	49221	322.9949	17.9444	248.5909
A-	•	I s t i t u t o B r u n o L e o n i	44.52	808	265	1691	9354	1221	11234	11.5767	1.5111	13.9035
A-		U r b a n I n s t i t u t e	45.08	816	3426	7568	7356	325	6930	9.0147	0.3983	8.4926
A-		F r a s e r I n s t i t u t e	44.86	804	1153	1426	10450	1829	8246	12.9975	2.2749	10.2562
A-		C e n t r e f o r C i v i l S o c i e t y	43.8	681	324	1917	10713	1288	16549	15.7313	1.8913	24.301
A-		T o k y o F o u n d a t i o n	46.12	806	175	29	28950	704	35633	35.9181	0.8734	44.2097
A-		I n t e r n a t i o n a l C r i s i s G r o u p	45.24	813	1606	4611	7825	421	6524	9.6248	0.5178	8.0246
A-		C e n t r o d e I n v e s t i g a c i o n e s E c o n o m i c a s N a c i o n a l e s	45.05	13830	537	4257	766	3056	14414	0.0554	0.221	1.0422
A-		H u d s o n I n s t i t u t e	44.83	806	2981	931	7527	2394	11060	9.3387	2.9702	13.7221
A-		B e l f e r C e n t e r f o r S c i e n c e a n d I n t e r n a t i o n a l A f f a i r s , H a r v a r d U n i v e r s i t y	43.63	817	597	166	13074	1621	20034	16.0024	1.9841	24.5214
A-		R e a l I n s t i t u t o E l c a n o	45.34	813	506	14855	7787	469	7722	9.5781	0.5769	9.4982
A-		C a m b o d i a D e v e l o p m e n t R e s o u r c e I n s t i t u t e	43.59	390	52	540	16120	2622	49599	41.3333	6.7231	127.1769
A-	•	K o n r a d A d e n a u e r F o u n d a t i o n	44.99	743	459	305	14306	3641	32364	19.2544	4.9004	43.5585
A-		R A N D C o r p o r a t i o n	44.79	822	1218	1640	7719	556	7495	9.3905	0.6764	9.118
A-		U n i t e d S t a t e s I n s t i t u t e o f P e a c e	43.8	826	2721	5074	3946	353	5215	4.7772	0.4274	6.3136
A-		A m e r i c a n E n t e r p r i s e I n s t i t u t e f o r P u b l i c P o l i c y R e s e a r c h	46.02	814	6234	687	8869	2545	16694	10.8956	3.1265	20.5086
A-	-	C e n t r o E u r o - M e d i t e r r a n e o s u i C a m b i a m e n t C l i m a t i c i	43.74	650	371	941	24545	1329	27322	37.7615	2.0446	42.0338

A -		Centre for European Reform	43.61	835	2978	295	11 308	1560	10982	13.5425	1.8683	13.1521
A -		Center for Global Development	45.25	822	1551	1127	13525	586	13821	16.4538	0.7129	16.8139
A -		Council on Foreign Relations	45.89	846	12449	51	14967	2706	23417	17.6915	3.1986	27.6797
A -		Adam Smith Institute	44.84	761	246	511	8629	2389	18177	11.339	3.1393	23.8857

A++	International Crisis Group	67.04	61	46578	4145	58058	763.5738	763.5738	951.7705
A++	Institute for International Policy Studies	67.84	431	11163	6947	170035	25.9002	25.9002	394.5128
A++	Consejo Latinoamericano de Ciencias Sociales	66.51	194	55103	3445	78871	284.0361	284.0361	406.5515
A++	Institute for Development and Global Governance	68.33	337	17864	9575	261515	53.0089	53.0089	776.0089
A++	Center for Social and Economic Research	71.4	425	21671	19931	373658	50.9906	50.9906	879.1953
A+	Instituto de Salud Pública de Chile	62.71	391	10596	1543	10868	27.0997	27.0997	27.7954
A+	Institute for Global Environmental Strategies	65.55	445	3507	2194	172969	7.8809	7.8809	388.6944
A+	Tokyo Foundation	64.12	155	20187	15479	131351	130.2387	130.2387	847.4258
A+	Institute of Foreign Affairs and National Security	64.19	272	10965	5322	117433	40.3125	40.3125	431.739
A+	National Institute of Advanced Industrial and Technology	63.26	400	4484	1672	48984	11.21	11.21	122.46
A+	Institute for World Economy and International Relations	63.07	357	2993	2516	84707	8.3838	8.3838	237.2745
A+	Transparency International	66.08	124	55264	3866	61866	445.6774	445.6774	498.9194
A+	Center for Strategic Studies	62.19	203	23249	2771	46263	114.5271	114.5271	227.8966
A+	Foundation for Political Innovation	65.13	351	6897	10047	73204	19.6496	19.6496	208.5584
A+	Fundación Libertad	64.97	220	46654	4356	28644	212.0636	212.0636	130.2
A	Centro de Implementación de Políticas Públicas para la Equidad y el Crecimiento	53.72	220	1317	432	2433	5.9864	5.9864	11.0591
A	Institute for Security Studies	56.67	85	5106	3187	118762	60.0706	60.0706	1397.2
A	Australian Institute for International Affairs	61.58	321	2095	2232	67665	6.5265	6.5265	210.7944
A	Bruegel	58.18	248	3831	825	20214	15.4476	15.4476	81.5081
A	Brookings Institution	57.59	126	16665	1957	20929	132.2619	132.2619	166.1032
A	Fernando Henrique Cardoso Institute	55.44	184	2380	664	22361	12.9348	12.9348	121.5272
A	Fundación para la Educación Superior y el Desarrollo	59.54	298	4958	1130	10895	16.6376	16.6376	36.5604
A	Cambodia Development Resource Institute	53.3	210	851	229	8181	4.0524	4.0524	38.9571

A		RAND Corporation	53.73	107	4823	1834	20293	45.0748	45.0748	189.6542
A		Development Alternatives	60.92	145	15542	5774	75320	107.1862	107.1862	519.4483
A		World Bank Institute	59.1	74	19489	3331	70574	263.3649	263.3649	953.7027
A		Asian Development Bank Institute	60.47	172	17291	1096	82164	100.5291	100.5291	477.6977
A		FUNDAR, Centro de Analisis e Investigacion	54.22	247	2108	221	2024	8.5344	8.5344	8.1943
A		Center for Policy Studies	55.61	83	8118	6952	38006	97.8072	97.8072	457.9036
A		Center for Free Enterprise	53.28	24	11470	5972	18232	477.9167	477.9167	759.6667
A-		Delhi Policy Group	52.6	71	1233	771	123283	17.3662	17.3662	1736.38
A-		National Institute for Defense Studies	52.21	91	2464	1388	36124	27.0769	27.0769	396.967
A-		African Centre for the Constructive Resolution of Disputes	50.91	224	115	338	1526	0.5134	0.5134	6.8125
A-		Friedrich Naumann Foundation for Freedom	51.48	99	1200	1162	31720	12.1212	12.1212	320.404
A-		Copenhagen Consensus Center	50.61	9	7779	1408	7230	864.3333	864.3333	803.3333
A-		Observer Research Foundation	48.41	85	3321	220	6877	39.0706	39.0706	80.9059
A-		Clingendael, Netherlands Institute of International Relations	46.52	115	52	420	5046	0.4522	0.4522	43.8783
A-		Center for Economic and Social Development	50.79	67	2603	1433	41329	38.8507	38.8507	616.8507
A-		Konrad Adenauer Foundation	47.46	59	1039	325	43842	17.6102	17.6102	743.0847
A-		Comision Economica para America Latina	49.26	88	3637	562	4095	41.3295	41.3295	46.5341
A-		Fundacao Getulio Vargas	51.95	41	11440	2294	16078	279.0244	279.0244	392.1463
A-		Asia Forum Japan	48.55	120	865	169	4851	7.2083	7.2083	40.425
A-		Institute of Statistical, Social and Economic Research	47.85	60	2090	1072	14306	34.8333	34.8333	238.4333
A-		Singapore Institute of International Affairs	48.67	1	1179	240	5072	1179	1179	5072
A-		Institute for International Political Studies	46.83	41	3251	748	22234	79.2927	79.2927	542.2927
A-		Indian Council for Research on International Economic Relations	51.45	165	343	431	9405	2.0788	2.0788	57
A-		Centre for Policy Analysis	48.65	56	4132	847	16923	73.7857	73.7857	302.1964
A-		Central Asian Free Market Institute	52.52	96	4258	431	45025	44.3542	44.3542	469.0104
A-		Institute for Liberty and Development	51.6	109	1882	1143	13350	17.2661	17.2661	122.4771
A-		National Institute for Research Advancement	51.63	90	3423	722	28838	38.0333	38.0333	320.4222

A++	Heritage Foundation	75.64	744	1903179	2090760	956451	106172	1662259	1285.552	142.7043	2234.219
A++	Amnesty International	68.49	238	1906951	1932690	258220	24031	557383	1084.958	100.9706	2341.945
A++	Human Rights Watch	62.88	754	2486268	2538263	229258	24469	294884	304.0557	32.4523	391.0928
A++	World Economic Forum	96.94	1058	5080389	4972613	5412152	269765	4786991	5115.456	254.9764	4524.566
A++	World Bank Institute	69.76	634	2392320	2396849	43246	10648	4130506	68.2114	16.795	6514.994
A+	Brookings Institution	56.04	783	386096	387441	86120	16074	118314	109.9872	20.5287	151.1034
A+	Cato Institute	56.72	698	361171	380715	56773	27725	161881	81.3367	39.7206	231.9212
A+	Comision Economica para America Latina	51.4	401	308520	308872	52657	1948	65524	131.3142	4.8579	163.4015
A+	Consejo Latinoamericano de Ciencias Sociales	54.54	787	238714	238638	103044	7130	151493	130.9327	9.0597	192.4943
A+	American Enterprise Institute for Public Policy Research	53.45	650	297632	305193	44857	10470	68998	69.0108	16.1077	106.1508
A+	Pew Research Center	55.56	805	247251	249039	83667	18267	144227	103.9342	22.6919	179.164
A+	Hoover Institution	57.5	674	318351	321214	154290	15011	296331	228.9169	22.2715	439.6602
A+	Transparency International	52.07	289	384291	386200	39112	3264	90895	135.3356	11.2941	314.5156
A+	Council on Foreign Relations	52.75	740	397434	401794	28725	6802	57549	38.8176	9.1919	77.7689
A+	Center for Strategic and International Studies	52.62	722	543777	542562	32181	2713	67706	44.572	3.7576	93.7756
A	Acton Institute for the Study of Religion and Liberty	50.16	669	804081	813302	6428	1885	29335	9.6084	2.8176	43.849
A	Urban Institute	44.6	365	28698	28608	12491	3349	24565	34.2219	9.1753	67.3014
A	Timbro	48.13	580	21828	20967	36663	8568	91137	63.2121	14.7724	157.1328
A	Fundacao Armando Alvares Penteado	47.29	575	174087	175903	4193	2290	59805	7.2922	3.9826	104.0087
A	French Institute of International Relations	46.66	667	88091	88494	12906	1384	28764	19.3493	2.075	43.1244
A	Fernando Henrique Cardoso Institute	47.03	340	184146	186653	5377	2877	36404	15.8147	8.4618	107.0706
A	Fraser Institute	49.81	645	23694	23391	36250	27126	43920	56.2016	42.0558	68.093
A	Observer Research Foundation	46.63	734	317431	318622	7698	232	16889	10.4877	0.3161	23.0095
A	Carnegie Endowment for International Peace	43.49	341	233340	234547	2525	342	9527	7.4047	1.0029	27.9384

			Twitter	Twitter	Facebook	Facebook	
A	•	Konrad Adenauer Foundation	41.61	32.54	44.99	47.46	41.44
A		Pew Research Center	39.13	53.85	47.1	0	55.56
A		Hoover Institution	42.93	64.27	49.96	0	57.5
A		Council on Foreign Relations	39.48	59.28	45.89	0	52.75
A		Asian Development Bank Institute	39.03	26.31	34.94	60.47	34.4
A		FUNDAR, Centro de Analisis e Investigacion	40.95	17.26	51.89	54.22	40.43
A-		Centro de Implementacion de Politicas Publicas para la Equidad y el Crecimiento	37.9	13.88	42.07	53.72	41.91
A-		Australian Institute for International Affairs	36.88	20.81	40.2	61.58	24.92
A-	---	Chatham House	35.68	53.29	46.81	0	42.62
A-		Timbro	37.49	58.6	43.24	0	48.13
A-		Centre for Independent Studies	38.32	36.2	42.76	41.65	32.66
A-		Fundacao Armando Alvares Penteado	36.91	28.73	25.74	45.88	47.29
A-	•	Friedrich E bert Foundation	35.63	27.81	33.79	40.33	40.57
A-		Tokyo Foundation	38.47	43.66	46.12	64.12	0
A-		Real Instituto Elcano	34.95	58.26	45.34	0	36.19
A-		Facultad Latinoamericana de Ciencias Sociales	36.72	32.45	33.66	36.64	44.12
A-		Mercurius Center	36.17	58.52	42.17	0	43.99
A-		Energy and Resources Institute	36.48	27.06	39.53	39.93	39.4
A-		Center for Social and Economic Research	37.53	18.73	32.53	71.4	27.47
A-		World Resources Institute	35.2	51.55	47.45	0	41.8
A-		Singapore Institute of International Affairs	38.37	15.44	63.35	48.67	26.01
A-		Adam Smith Institute	35.23	53.28	44.84	0	42.81
A-		Centre for Strategic and International Studies	36.64	48.51	38.6	30.85	28.6
A-		Center for Strategic and International Studies	35.24	45.28	43.06	0	52.62
A-		Center for Policy Studies	37.61	30.94	41.56	55.61	22.33
A-		Foundation for Political Innovation	35.35	3.97	41.59	65.13	30.73

" "

" " " " 2014 "

"

The Rise of Think Tanks

- Zhu, Xufeng, " Think Tanks in Politically- embedded Knowledge Regimes: Does " Revolving Door" Matter in China?" International Review of Administrative Sciences, 2018.
- Lan Xue, Xufeng Zhu, & Wanqu Han, " Embracing Scientific Decision Making: The Rise of Think Tank Policies in China" , Pacific Affairs, 2018.
- Patrick Köllner, Xufeng Zhu, & Pascal Abb, " Understanding the Development of Think Tanks in Mainland China, Taiwan, and Japan" , Pacific Affairs, 2018.
- Zhu, Xufeng and Peipei Zhang, " Intrinsic Motivation and Expert Behavior: Roles of Individual Experts in Wenling Participatory Budgeting Reform in China" , Administration & Society, 2016.
- Zhu, Xufeng, " In the Name of ' Citizens' : Civic Activism and Policy Entrepreneurship of Chinese Public Intellectuals in the Hu- Wen Era" , Journal of Contemporary China, 2016.
- Zhu, Xufeng, " Policy Change and Expert Involvement in China" , Public Administration, 2013.
- Zhu, Xufeng, " Government Advisors or Public Advocates? Roles of Think Tanks from the Perspective of Regional Variations" , The China Quarterly, 2011.
- Zhu, Xufeng, " Making Guanxi More Influential: Bureau Chiefs and Policy Experts in the Chinese Policy Decision- making Process" , The China Review, 2009.
- Zhu, Xufeng, " The Influence of Think Tanks in the Chinese Policy Process: Different Ways and Mechanisms" , Asian Survey, 2009.
- Zhu, Xufeng, " Strategy of Chinese Policy Entrepreneurs in the Third Sector: Challenges of " Technical Infeasibility" , Policy Sciences, 2008.
- Zhu, Xufeng, Lan Xue, " Think Tanks in Transitional China" , Public Administration and Development, 2007.

